

TechLine T3

Primer

Base Coat

Clear Coat

The Techline T3 is an economically priced gravity feed gun for use with a wide range of coatings from primers to top coats and stains. The T3 combines C.A.T. fine finish nozzles on a low cost gun body so you can achieve the best of both worlds -- economy and fine finish. Spray gun complies with all environmental regulations.

TechLine T3

Features

- 45 PSI Inlet Pressure
- Patented 2 Piece Nozzle Design
- Air Adjusting Valve
- HVLP - 65% Transfer Efficient or Better



| | |
|-------------------|------------------------|
| <u>PRIMER</u> | <u>1.9 mm - 2.2 mm</u> |
| <u>BASE COAT</u> | <u>1.5 mm</u> |
| <u>CLEAR COAT</u> | <u>1.3 mm</u> |

TechLine T3

Gravity Cups



700 mL
(Plastic)
51-400



700 mL
(Aluminum)
51-401



1000 mL
(Aluminum)
51-403

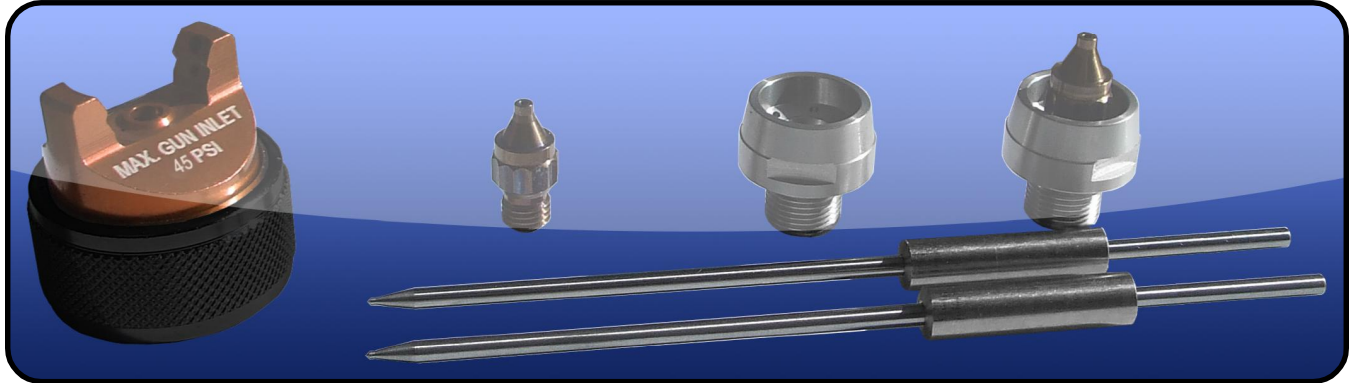
3M™PPS™ Starter Packs



950 mL
(Large 3M™PPS™)
91-480



650 mL
(Medium 3M™PPS™)
91-481

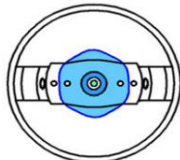
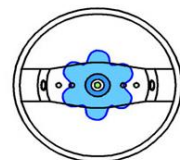


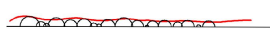



TechLine T3 Nozzle Chart

| Material | Orifice Size | T3 HVLP |
|----------------------------|--------------|-------------------|
| Stains, Dyes | 1.0 | 45 PSI @ 13.5 CFM |
| Single Stage | 1.3 - 1.4 | 45 PSI @ 13.5 CFM |
| Base Coat | 1.3 - 1.4 | 45 PSI @ 13.5 CFM |
| Clear Coat | 1.3 - 1.4 | 45 PSI @ 13.5 CFM |
| High Solid Clears | 1.4 - 1.5 | 45 PSI @ 13.5 CFM |
| Sealer | 1.4 - 1.7 | 45 PSI @ 13.5 CFM |
| Primer, Wash Primer, Epoxy | 1.4 - 1.7 | 45 PSI @ 13.5 CFM |

Q: What makes our atomization superior?

A: Our 12 Point Balanced Plenum

| TechLine | Competition |
|---|--|
|  <p>12 point diffusion makes a more even cone of air as the fluid is atomized</p> |  <p>Without 12 point diffusion, high and low spikes exist as the air atomizes the fluid</p> |
|  <p>The result is more uniform particles</p> |  <p>The result is very small and large particles</p> |
|  <p>A flatter more uniform finish is achieved</p> |  <p>This will have a more orange peel finish</p> |

Nozzle Kits for TechLine T3

| HVLP Kit | Orifice Size | Air Cap (Included) | Orifice (Tip) (Included) | Needle (Included) |
|----------|--------------|--------------------|--------------------------|-------------------|
| TK1010 | 1.0 mm | 23-1010 | 33-0210 1.0mm (.040") | 40-P1310 |
| TK1012 | 1.2 mm | 23-1012 | 33-0212 1.2mm (.046") | 40-P1312 |
| TK1013 | 1.3 mm | 23-1013 | 33-0213 1.3mm (.052") | 40-P1313 |
| TK1014 | 1.4 mm | 23-1014 | 33-0214 1.4mm (.055") | 40-P1314 |
| TK1015 | 1.5 mm | 23-1015 | 33-0215 1.5mm (.059") | 40-P1315 |
| TK1017 | 1.7 mm | 23-1017 | 33-0217 1.7mm (.070") | 40-P1317 |
| TK1019 | 1.9 mm | 23-1019 | 33-0219 1.9mm (.075") | 40-P1319 |
| TK1022 | 2.2 mm | 23-1022 | 33-0222 2.2mm (.086") | 40-P1322 |