

Panther 100G

100 Series Teflon Coated Conventional

The Panther 100G is a high quality general purpose sprayer designed for spraying adhesives. Complete with an all stainless steel fluid passage, this spray gun is perfect for all coatings from thin to thick.

Panther 100G

Features

- ➔ Forged Aluminum Body
- ➔ Stainless Steel Fluid Passages
- ➔ Heavy Duty Needle Spring
- ➔ Teflon Hard Coat Gun Body
- ➔ Teflon Hard Coat Air Cap



1 Quart
Pressure Cup
(Aluminum)

OP100G-18-2266-3T-350R

Panther 100G

"Teflon Coated Durability"

Available Outfits

2 Quart Outfits

(Includes 5' Hose Assemblies)



2 Quart
(Economy)

OP100G-130



2 Quart
(Bandit)

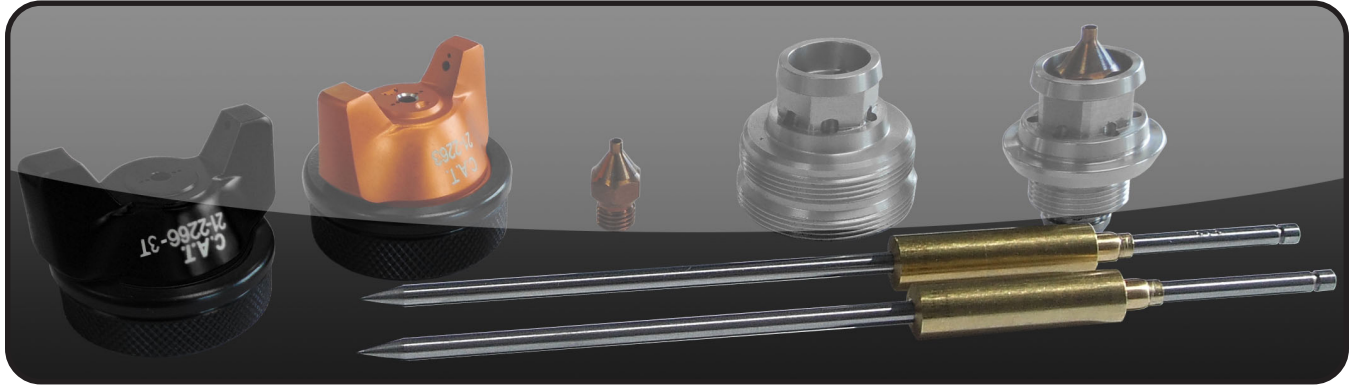
OP100G-600

Tank Outfits

Tank Outfits Include 25' Hose Assemblies and are available in 2.5 gal, 5 gal, 10 gal, 12.5 gal and 15 gal sizes.

(Includes 25' Hose Assemblies)





Nozzle Chart for *Panther100G*

Material Type	Fluid Orifice x Air Cap	Maximum Pattern Width	Pressure / Siphon
Very Thin less than 16 sec. Zahn #2 inks, dyes, solvents, stains	0.6, 0.7 mm x 2163	8	P
	0.6, 0.7 mm x 2166	9	S
	0.6, 0.7 mm x 2266T	12	S
Thin 16 to 20 sec. Zahn #2 lacqers, enamels, primers, sealers	0.6, 0.7, 1.0 mm x 2163	8	P
	0.6, 0.7, 1.0 mm x 2366	14	S
	0.6, 0.7, 1.0 mm x 2466	13	S
Medium 21 to 30 sec. Zahn #2 automotive base coat enamels, primers, epoxies, urethanes, automotive clear coat	1.2, 1.3, 1.5, 1.8 mm x 2263	14	P
	1.2, 1.3, 1.5, 1.8 mm x 2266T	10	S
	1.2, 1.3, 1.5, 1.8 mm x 2266-3T	15	P/S
	1.2, 1.3, 1.5, 1.8 mm x 2466	13	S
Heavy over 30 sec. Zahn #2 heavy body primers, high solid enamels, high solid automotive coatings, adhesives	1.5, 1.8 mm x 2466	13	S
	2.2 mm x 2167	12	P
	2.2 mm x 2267	15	P
	2.8 mm x 2168	12	P

Common Air Caps for *Panther100G*

Air Caps	Pressure / Siphon	Max Inlet Pressure	CFM @ Max Inlet Pressure
21-2266T	Siphon	50 PSI	12 CFM @ 50 PSI
21-2266-3T	Pressure	50 PSI	16.2 CFM @ 50 PSI
21-2263	Pressure	50 PSI	14 CFM @ 50 PSI
21-2166	Siphon	50 PSI	5 CFM @ 50 PSI
21-2366	Siphon	50 PSI	12 CFM @ 50 PSI
21-2466	Siphon	50 PSI	15 CFM @ 50 PSI
21-2167	Pressure	50 PSI	14.5 CFM @ 50 PSI
21-2267	Pressure	50 PSI	15 CFM @ 50 PSI
21-2168	Pressure	50 PSI	14 CFM @ 50 PSI