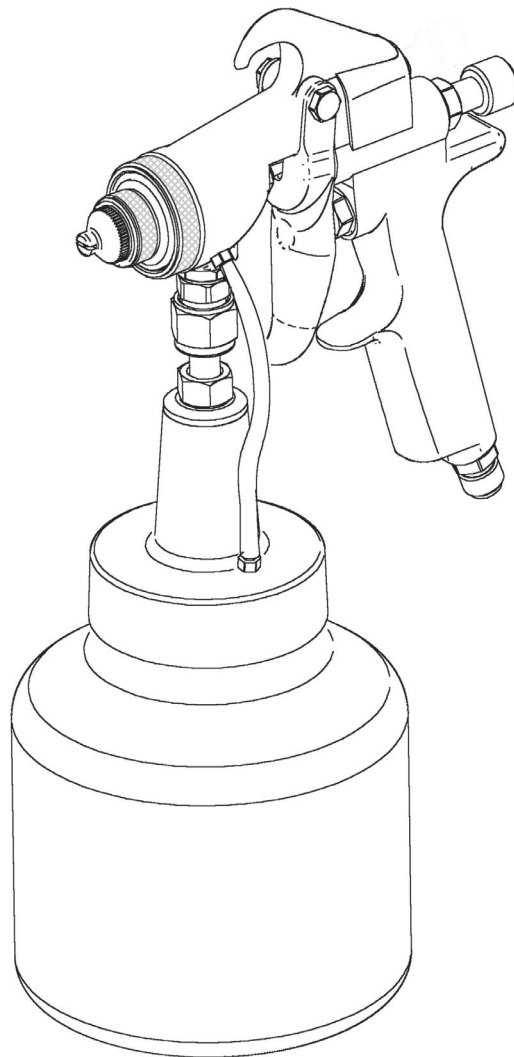




Lynx MultiColor Spray Gun with pressure cup

Model L100CM



C.A. Technologies

P.O.Box 17820

Boulder, CO 80301

www.spraycat.com

888 820 4498

303 438 5707

FAX: 303 438 5708

Operation and maintenance instructions for *Lynx* L100CM spray guns

General description

The L100CM is a "bleeder type"(atomizing air flows continuously) spray gun with pressurized material supply cup and an internal mix style spray nozzle. It has been optimized for the application of multi-color coatings but also is excellent for single color latex or oil based interior paints.

Set-up and Operation

1. Connect a REGULATED air supply hose to the ¼" fitting on gun handle.
2. Connect the paint cup attachment to the 3/8" fluid inlet fitting on gun head.
3. Attach the 1/8" nylon tube on top of paint cup lid to the pressurization port on gun head.
4. Remove paint cup and fill with material to be sprayed. Reattach cup to cover and tighten firmly.
5. Turn on air supply and adjust pressure to material suppliers recommendation for material to be sprayed. Air will flow continuously pressurizing the paint cup.
6. Fluid flow can be controlled using the fluid control knob; this restricts flow by limiting needle travel.

Maintenance

IMPORTANT! Routine cleaning and maintenance is essential to insure proper gun operation. Several states prohibit spraying solvent into the atmosphere and require the use of a covered gun cleaner.

1. If a gun cleaner is being used, connect and clean the gun in the gun cleaner according to the manufactures Instructions.
2. If a gun cleaner is not being used, first clean the paint cup thoroughly then spray clean solvent thru the gun until clean. Remove air nozzle and clean separately if necessary.

NOTE: Gun head disassembly is not recommended for normal cleaning and maintenance.

Gun head disassembly and reassembly instructions

NOTE! New seals must be used when reassembling gun head
Have repair kit No. 10-106 on hand before disassembling gun head

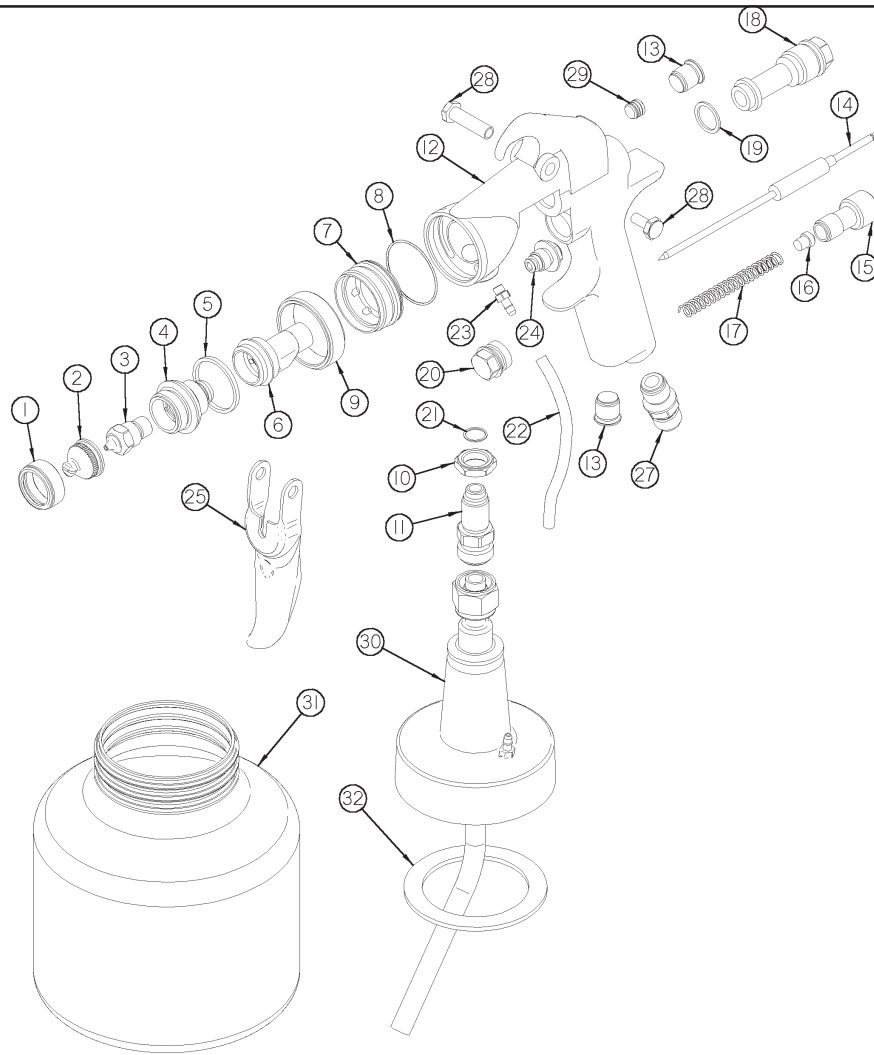
Gun head disassembly

To remove the nozzle carrier (6) and air cap adapter (7):

1. Remove the air cap (2), fluid nozzle (3), and needle (14)
2. Remove the needle seal cartridge (24)
3. Loosen the locknut (10) and remove fluid inlet (11) using a 5/8" open-end wrench.
4. The nozzle carrier and air cap adapter will now slide forward from the gun handle (12).

Gun head reassembly

1. Install a new o-ring (8) on the air cap adapter
2. Install the thread locknut (10) onto the fluid inlet as far as possible.
3. Install a new seal (21) into the recess of the fluid inlet port in nozzle carrier (6)
4. Slide the nozzle carrier (6) into air cap adapter (7) and insert into the gun body as far as possible. Be sure the nozzle carrier extends into the hole at the back of the gun head. Install the needle seal (24) but do not tighten.
5. Rotate the nozzle carrier until the fluid inlet port in the nozzle carrier is aligned with the threaded hole in the gun body while in this position, insert the fluid inlet (11) and tighten firmly.
6. Tighten the needle seal (24) to approx. 12 ft-lb. torque.
7. Tighten the fluid inlet (11) to approx. 25 ft-lb. torque.
8. Tighten the locknut (10) to approx. 33 ft-lb. torque.



ITEM NO.	PART NO.	DESCRIPTION	ITEM NO.	PART NO.	DESCRIPTION
1	21-204	RETAINING RING	17	60-204*	NEEDLE RETURN SPRING
2	21-223 or 21-224	AIR CAP	18	60-201	REAR BUSHING
3	31-0718	FLUID NOZZLE	19	60-119*	SEAL
4	31-2202	FLUID NOZZLE BODY	20	60-309	PLUG
5	61-1005	SEAL*	21	60-124*	FLUID INLET SEAL
6	60-L11C	NOZZLE CARRIER	22	53-20-4.3	1/8" NYLON TUBE
7	60-12C	AIR CAP ADAPTER	23	60-502	BARB FITTING
8	60-131	O-RING*	24	60-1400*	NEEDLE SEAL ASSEMBLY
9	20-0201	THREAD PROTECTOR	25	60-2101	TRIGGER
10	60-128	LOCKNUT	26		
11	60-126	FLUID INLET	27	60-104	AIR INLET FITTING
12	60-1124-P	GUN BODY	28	60-1033	TRIGGER PIVOT SET
13	60-122	AIR VALVE PULG	29	98-109	SET SCREW
14	40-1718	NEEDLE ASSEMBLY	30	51-353	CUP COVER ASSEMBLY
15	60-202	FLUID CONTROL KNOB	31	52-351	CUP (750 ML)
16	60-205*	SPRING SEAT	32	51-358	CUP GASKET

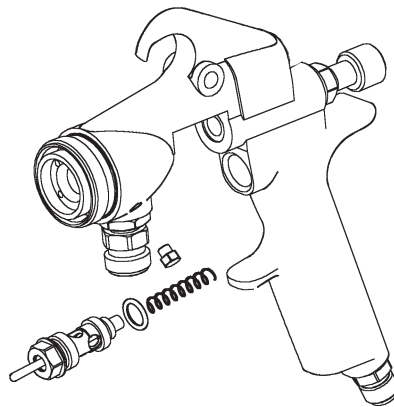
* PARTS INCLUDED IN REPAIR KIT 10-106

Converting the *Lynx* L100CM cup gun into a high production gun

Conversion Kit 10-400 contains:

- 60-503 Plug
- 60-1520 Air valve assembly
- 31-2218 Fluid nozzle body and fluid tip
- 61-1005 Gasket
- 21-1584 Retaining ring
- 21-200 air nozzle
- 21-1583 Air nozzle base assembly
- 40-1115 fluid needle assembly

1. Remove trigger screws (28) and remove trigger
2. Remove air valve plug (20)
3. Install 60-1520 air valve assembly including spring and seal
4. Remove 1/8" nylon cup pressurization hose from barb fitting on spray head.
Remove brass barb fitting.
5. Install 60-503 brass plug into gun head.
6. Reinstall trigger and trigger screws.



The gun can now be used with the fluid nozzle and air cap supplied with the gun originally or they can be replaced with new fluid nozzle, air nozzle, and needle as described below.

7. Remove existing air nozzle ring (1), air nozzle (2), fluid nozzle (3).
8. Remove thread protector (9).
9. Using a 1/4" Allen wrench remove fluid nozzle body (4) and gasket (5).
10. Install new fluid nozzle body using a 15mm open end wrench and install fluid tip using 3/8" x 1/4" drive socket.
11. Install new gasket 61-1005.
12. Install 21-1583 air nozzle base assembly.
13. Install 21-200 air nozzle.
14. Install new needle.